



ChamberNET

Quarterly Mailing

1ST QTR.
2024



WWW.SALINAKANSAS.ORG

KS Tourism's 2024 Sunflower Summer Program is a Game Changer!

Visit Salina is encouraging our attractions, restaurants, and hotels to be a part of the [2024 Sunflower Summer Program](#) because it brings thousands of visitors to Salina, plus attractions are reimbursed for admission! This is for admission-based, and non-admission-based attractions. Restaurants and hotels can gain exposure on the program by adding a [coupon or deal on TravelKS.com](#).

[2024 Sunflower Summer Program](#) offers a chance for Kansas families to explore the Sunflower State — for free. Last year [The Rolling Hills Zoo](#) and [The Garage](#) participated in the program and the response they received was amazing! Staff at both attractions said it was a game changer to how they will be able to operate this year. These attractions are excited to be a part of the program again and encourage other Salina businesses to be a part in 2024!

**SUNFLOWER
SUMMER**

APPLY NOW



To participate [you must apply](#) no later than March 15. Venue Applications are open January 22 - March 15. The program runs May 25 – August 11, 2024.

The program is app-based and will feature coupons and offers, so even if your business doesn't fit the attraction categories in the program guidelines, your business can likely gain exposure via the coupon and offers option on the [2024 Sunflower Summer Program](#) App. Learn more by visiting the link below.

<https://www.travelks.com/travel-industry/programs-and-resources/sunflower-summer-information-faqs/>

If you need more info about Salina's participation in the [2024 Sunflower Summer Program](#), please contact Tiffany at Visit Salina via email: tbenien@salinakansas.org or phone: 785-827-9301 x 130.



NEW HORIZON
SERVICES, INC.

A Community of Inclusion & Support

At New Horizon Services, Inc., we strive to reshape the way disability services are provided. Our goal is to provide care by cultivating a community of inclusion, support, and growth.

Through real world experiences and activities, compassionate case management, and life skills for quality living spaces, we offer our support for life enrichment, education, and work towards leading lives as independent as possible.

To learn more, reach us by phone, website, social media, or stop by!

(785) 833-6540

1813 S. Ohio St.
Salina, KS 67401

www.newhorizonservices.com

 @NewHorizonServices

Our Services



Residential Services, with options for 24 hr staffed homes and independent living



Case Management to help with needs, resources, and care with open communication.



Day Services where we work to build soft skills and job skills, community involvement, and building blocks for independence.

IT'S BACK!

Salina Public Library's **SEED LIBRARY**

Open February 1-June 30

CHOOSE FROM OFFERINGS OF FRUIT, VEGGIE, HERB,
AND FLOWER SEEDS.

GROWING GUIDES TO KICKSTART YOUR GARDEN
ARE AVAILABLE!



12,355
SEED PACKETS
TAKEN IN 2023!

785-825-4624 | SALINAPUBLICLIBRARY.ORG | 301 W. Elm, Salina, KS

**MAKE A DIFFERENCE,
SUPPORT THE SEED LIBRARY.**

HELP US STOCK THE SHELVES FOR YOUR COMMUNITY.

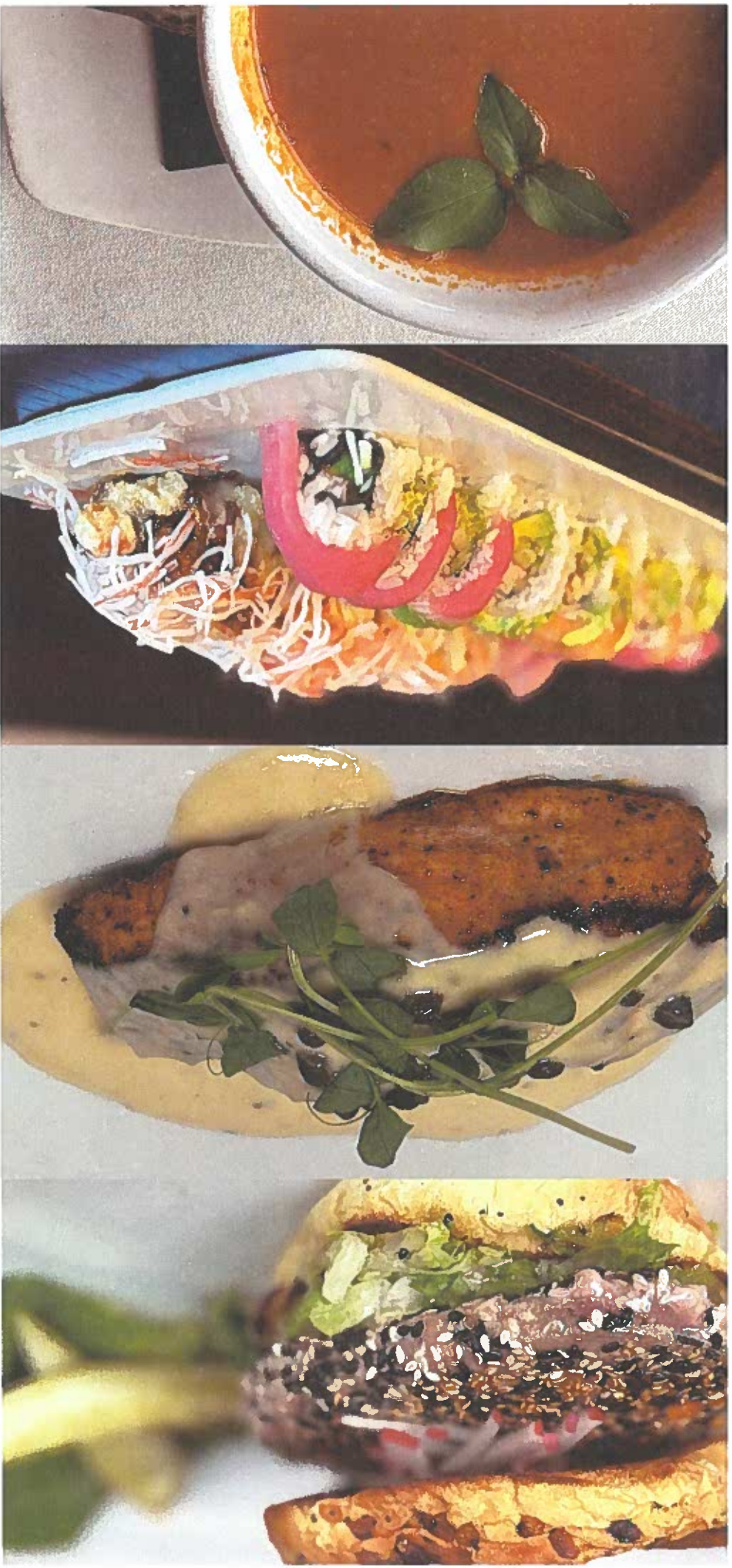
Now accepting donations for
ALL seed varieties

Seeds must be in original,
unopened packets

OR a \$1 donation=1 seed packet
Drop off or mail to SPL

WE CANNOT ACCEPT
HOMEMADE SEED PACKETS





Looking for a private and professional space to hold business lunches or dinners? Stream your presentation to the tv mounted on the wall and enjoy a fabulous meal while discussing important matters.

We have two separate dining areas perfect for larger groups for any occasion, located in the heart of Downtown Salina.

Call 785-833-2272, email at info@barologrille.com or visit us at barologrille.com

Workforce solutions provided by Express Employment Professionals.



Service Lines

No matter the job or expertise required, Express can provide talented people for every level and area within your company.

- Light Industrial
- Office Services
- Skilled Trades
- Professional



Staffing Solutions

Our range of staffing solutions allows us to develop unique workforce strategies that help ensure you meet productivity goals.

- Temporary Staffing
- Contract Staffing
- Evaluation Hire
- Direct Hire
- Timekeeping and Vendor Management



Affiliated Companies and Resources

We're constantly evolving to meet ever-changing market demands. Depending on your specific situation, additional resources may be available.

- ExpressLane — a vendor management service
- Specialized Recruiting Group*
- Express Healthcare Professionals*
- Employer resources that address common workplace challenges

*In select locations

Total Client Care

Ultimately, our goal is to earn the right to be an integral part of your company's success, not just through the services we offer, but also in the level of trust we place in each other.



We're locally owned and operated with the support and stability of an international headquarters with four decades of staffing and HR expertise. It's the best of both worlds—small business flexibility, big company resources.





24-7STORES.COM/FLEETCARD

KEEP YOUR FLEET COSTS DOWN!

Save
up to

17¢

**DIESEL
PER GALLON***

**Discounts off the credit price.*



Hurry!
APPLY NOW!

24-7STORES.COM/FLEETCARD





Established since 2012, licensed & insured.

AMAZING RESULTS AT AN UNBEATABLE VALUE



SERVICES WE OFFER

- Carpet Cleaning
- Tile & Grout Cleaning
- Upholstery Cleaning
- Window Cleaning
- Office Cleaning
- Janitorial Services
- Flood Water Removal
- And Much Much More...



785.643.4111

Commercial & Residential Cleaning

Your one-stop shop for all things cleaning.

The Steam Team provides cleaning services in Salina and the surrounding areas. We are fully licensed and insured for your complete peace of mind. Your satisfaction is 100% guaranteed on every single job! Sit back and relax, The Steam Teams got you covered. Call us for a free estimate or for your convenience book directly online!

What Our Customers Are Saying

Janet Meadows
5 stars

Declar was on time, courteous, and professional. He got the tile in my kitchen and bathroom back to looking new in less than an hour for a really good price. Excellent customer service and quality of work. I fully recommend.

Wayne May
5 stars

Incredible service! Stayed in contact with us and let us know when they were on their way! They did an amazing job on our rug! They look brand new now!! Thank you! Will use you again!! Highly recommend!!



TOP RATED LOCAL COMPANY IN SALINA, KS!



**BOOK
ONLINE**

thesteamteamkansas.com

WHOLE HOUSE

4 AREAS & HALL
STEAM CLEANED

\$199.99

PET TREATMENT

REMOVE PET
STAINS AND ODOR
PRICE PER ROOM

\$24.99

10% OFF

BOOK ONLINE
AND RECEIVE 10%
OFF ANY SERVICE

10% OFF

greater salina community foundation

MATCH MADNE\$\$



Saint Francis
MINISTRIES

Be a champion for charity on Thursday, March 21!

Match Madness gifts provide long-term support to charities, which helps keep their programs and services available **for years to come**.

On March 21, donations will be **matched up to 50%** to help meet participating organizations' **current needs**. It's a win-win!

.....

Your generous contribution supports Saint Francis Ministries programs and services that provide healing and hope to children, young people, and families.



GIVE IN PERSON

Salina Fieldhouse

7 am to 7 pm on 03/21/24



GIVE ONLINE

www.MatchMadnessGSCF.org

Midnight to 11:59 pm on 03/21/24



GIVE IN PERSON

Salina Fieldhouse

7 am to 7 pm on 03/21/24

Prickly Pear

7 pm to 11 pm on 03/21/24



GIVE ONLINE

www.MatchMadnessGSCF.org

Midnight to 11:59 pm on 03/21/24

Be a rockstar for charity on Thursday, March 21!

Help us make Match Madness #13 "The Lucky One!"

Match Madness provides long-term support for local nonprofits so that they can impact and serve our community now and forever.

You make a donation to one or more local nonprofit permanent endowed funds held at the Community Foundation and the Community Foundation matches it up to 50% from a \$313,000 match pool with an instant cash grant that the nonprofit can use for immediate needs. It's a win-win!



greater salina community foundation

2024 **MATCH
MADNE\$\$**



13

13



Thank you to our 2024 Event Sponsors!



Match Pool

- Anonymous Donor(s)
- Mark & Jane Berkley
- Mike & Debbie Berkley
- Holm Automotive
- Schwan's
- Don Dieckhoff Fund for Greater Salina

- Fund for Greater Salina
- KHF Operating Fund for GSCF



Saline County 5th Graders

- Anonymous Donor
- Mark & Jane Berkley
- Ken & Karen Ebert
- John & Brenda Peterson
- Brad & Cassie Shields
- Larry & Christy Smith

Bill Grevas Memorial Free Throw Contest

**BENNINGTON
STATE BANK**

BE Wealth Half Court Contest

BE WEALTH



2024 Participating Organizations & Funds:

- | | | |
|--|--|--|
| <p>A Work in Progress
 AMBUCS- Salina AM Breakfast Bandits
 American Red Cross of Greater Kansas
 Ashby House
 At Stake Ministries
 Back to School Fair Fund (Saline County)
 Belmont Boulevard Christian Church
 Bethany College
 Bethany Village
 Big Brothers Big Sisters of Salina
 Build A Pro Foundation
 Catholic Charities of Northern Kansas
 Central Kansas Mental Health Center
 Cerebral Palsy Research Foundation of Kansas
 Child Advocacy and Parenting Services (CAPS)
 Child Care Aware of Kansas
 Christ Cathedral
 Christ the King Lutheran Church
 Church of the Cross- United Methodist
 CKF Addiction Treatment
 Cornerstone Classical School
 Coronado Area Council, Boy Scouts
 Domestic Violence Association of Central Kansas (DVACK)
 First Presbyterian Church of Salina
 First Tee- Salina
 Friends of the River Foundation
 Friends of the Smoky Hill Museum
 Fund for Early Childhood, Care, Education & Development
 The Garage
 The Harvester Foundation
 Heartland Early Education
 Independent Connection, Inc.
 Kansas Interscholastic Athletic Administrators Association (KIAAA)</p> | <p>Kansas Museums Association
 Kansas Music Educators Association (KMEA)
 K-State Salina Aerospace & Technology Campus
 Kansas Wesleyan University
 Kansas Youth Sports
 KU School of Medicine (Salina)
 KU School of Nursing (Salina)
 The Land Institute
 Love, Chloe Foundation
 Martin Luther King, Jr. Child Development Center
 Meals on Wheels (Salina)
 The Nature Conservancy of Kansas
 Nex-Generation Round Up for Youth, Inc.
 Noon Network AMBUCS
 North Salina Community Development, Inc.
 OCCK, Inc. / Access Foundation of Kansas, Inc.
 Packages for Warriors- Heart of America, Inc.
 PrairieLand Market, Inc.
 Pregnancy Service Center
 Rolling Hills Zoo
 Sacred Heart Jr./Sr. High School
 St. Elizabeth Ann Seton Catholic Parish
 Saint Francis Ministries
 St. John's Military School Historical Museum
 St. John's Missionary Baptist Church
 St. Mary Queen of the Universe Catholic Church
 St. Mary's Grade School
 Salina Animal Shelter
 Salina Area Technical College
 Salina Area United Way
 Salina Area Young Life
 Salina Art Center
 Salina Arts & Humanities Foundation</p> | <p>Salina Babe Ruth
 Salina Child Care Association
 Salina Education Foundation
 Salina Emergency Aid Food Bank
 Salina Family Healthcare Center
 Salina Family YMCA
 Salina Grace
 Salina Heights Christian Church
 Salina Initiative for Restorative Justice (SIRJ)
 Salina Public Library
 Salina Regional Health Foundation
 Salina Rescue Mission
 Salina Shares
 Salina Symphony
 Salina Youth Baseball Fund
 Saline County 4-H Development Fund
 Saline County Department of Senior Services
 Saline County Sheriff's Mounted Patrol & Rescue Squad
 The Salvation Army (Salina)
 Smoky Hill Education Foundation
 Smoky Hill River Festival Legacy Fund
 The Stiefel Theatre
 Sunflower Adult Day Services
 Sunrise Presbyterian Church
 TeenTown, Inc. dba The City
 The Temple (Salina Innovation Foundation)
 Theatre Salina
 Trinity Lutheran Church
 Trinity United Methodist Church Foundation
 Unitarian Universalist Fellowship
 University United Methodist Church
 Webster Conference Center
 Women Helping Women Fund
 YW Legacy Fund</p> |
|--|--|--|

Join us for all the fun on March 21!

Salina Fieldhouse, 7 am to 7 pm | Prickly Pear, 7 pm to 11 pm



Donation Station

Donate in person 7 am to 7 pm at the Fieldhouse or 7 pm to 11 pm at Prickly Pear.

Donate online midnight to 11:59 pm at www.matchmadnessgscf.org.



Free Throw & Half Court Contest

Cheer on your favorite nonprofits as they participate in a free throw and half court shot contest to earn bonus grants.



Nonprofit Booths

Meet nonprofit reps to learn more about their mission and work in the community.



Food Trucks

Make your donation and grab lunch or dinner to go! Food trucks will be at the Fieldhouse from 11 am to 6 pm.



Don't miss the After Party!

Prickly Pear, 7 pm to 11 pm

- Free appetizers
- Cash bar
- March Madness games on TV
- Selfies with Taylor





BREAKING NEWS!



INTUIT
quickbooks

New Sales Ending July 31, 2024!

- ❌ QuickBooks Desktop Pro Plus
- ❌ QuickBooks Desktop Premier Plus
- ❌ QuickBooks Desktop Mac Plus
- ❌ QuickBooks Desktop Enhanced Payroll

WHAT DOES THIS MEAN FOR USERS?



Get Educated Here!

Link to our regularly updated blog post
"Preparing for the Future: QuickBooks
Desktop Sunsetting"

SCHEDULE A FREE CALL!

UCENTRIC.BIZ
SALINA, KANSAS

Intuit quickbooks Certified ProAdvisor Advanced Online
Intuit quickbooks Certified ProAdvisor Online
Intuit quickbooks Certified ProAdvisor Payroll

Since 2011, our firm has been utilizing QuickBooks Online to assist small and mid-sized businesses in Kansas with virtual accounting and bookkeeping services.

We can help you move to QuickBooks Online when you are ready!

Walk Kansas

Commit to the well-being of your employees and your business by making Walk Kansas, an eight-week physical activity program, part of your employee wellness program!



MARCH 31 - MAY 25

Visit walkkansas.org
or scan below



 Lisa Newman

 307 N Concord,
Ste 190, Minneapolis

 (785)392-2147

 lmnewman@ksu.edu


K-STATE
Research and Extension

Central Kansas
District

Registration opens March 4th!

HOW CAN YOUR BUSINESS PARTICIPATE?

- Sponsor your employees in Walk Kansas
- Encourage your employees to enroll
- Enhance participation through in-house activities or competitions

INVESTMENT RETURN - CHARACTERISTICS OF AN EMPLOYEE WELLNESS PROGRAM:

- Improved productivity
- Lower employee turnover
- Reduces absenteeism
- Reduces workers' compensation costs
- Decreases work related stress
- Decreases employee presenteeism
- Enhances morale and teamwork
- Creates a culture of health

K-State Research and Extension is committed to providing equal opportunity for participation in all programs, services and activities. Program information may be available in languages other than English. Reasonable accommodations for persons with disabilities, including alternative means of communication (e.g., Braille, large print, audio tape, and American Sign Language) may be requested by contacting Lisa Newman two weeks prior to the start of the event at (785) 392-2147 or lmnewman@ksu.edu. Requests received after this date will be honored when it is feasible to do so. Language access services, such as interpretation or translation of vital information, will be provided free of charge to limited English proficient individuals upon request.

Kansas State University Agricultural Experiment Station and Cooperative Extension Service
K-State Research and Extension is an equal opportunity provider and employer.



We Want Your Feedback!



COMMUNITY NEEDS ASSESSMENT SURVEY

Your input is invaluable to us! At Central Kansas Mental Health Center, we are dedicated to serving the diverse needs of our community. To ensure we continue to meet your needs effectively, we are conducting a comprehensive Community Needs Assessment. We invite you to take a few moments to complete a short survey that will aid us in understanding the priorities, concerns, and preferences of our community members.

Use the QR Code to access the online survey or go to:

<https://survey.alchemer.com/s3/7655696/Central-CCBHC-Needs-Assessment-Community-Survey>

For Spanish language version: follow the QR code or link, click on the globe icon in the top right corner, select Spanish.

Para la versión en español: sigue el código QR o enlace, haz clic en el ícono del globo en la esquina superior derecha y selecciona español.



CKMHC has contracted with The Learning Tree Institute at Greenbush to facilitate our needs assessment.

SAVE THE DATE

MATCH MADNESS

Celebrate 60 years of service and help us launch "\$60K for 60 Years!" Together, we can build a brighter future for individuals and families affected by mental health challenges.

A donation to CKMHC during Match Madness will help us continue to provide essential mental health services throughout our communities for the next 60 years and beyond.

MAR
21
2024

7 AM - 7 PM | THE FIELDHOUSE

greater salina community foundation

2024 **MATCH**
MADNESS



CENTRAL KANSAS MENTAL HEALTH CENTER CELEBRATING 60 YEARS!



1963

President Kennedy signs the "Community Mental Health Centers Act" establishing the Community Mental Health Center system.

Dickinson, Ellsworth, Ottawa and Saline Counties joined together to create a regional Community Mental Health Center, establishing CKMHC.

1964

1972

Lincoln County joins CKMHC, expanding our reach to the present five counties.

CKMHC's main office is moved from a small building at 9th and Crawford to our current campus at 809 Elmhurst in Salina.

1977

1985

"Crossroads Club" is formed providing community support services, with the first case managers joining the team in 1989 and the Crossroads building added in 1993.

1997

O.L. Martin Center is purchased continuing the expansion of CKMHC's main campus.

Martin Youth Center opens providing a 72-hour crisis house, behavior stabilization, respite care, and a suspension program for ages 6-17.

2016

2018

CKMHC is selected as a state pilot site for Kansas Behavioral Health Integration into Schools program expanding school based services that currently support over 500 students every year across all five counties.

Awarded a federal SAMHSA grant to build the new CCBHC model for mental health enhancing access, quality of services, and care coordination.

2021

2023

Services are expanded with the addition of a mobile crisis response vehicle and partnership with Saline Co. to establish co-responders.

CKMHC proudly achieves full CCBHC certification from the Kansas Department of Aging and Disability Services, positioning us for continued growth and development as we look towards the future.

2024

785-823-6322 | www.ckmhc.org | FAX 785-823-3109
809 ELMHURST BLVD, SALINA, KS

Mental Health **FIRST AID**
from NATIONAL COUNCIL FOR MENTAL WELLBEING



Salina Area United Way
FUNDED PARTNERS 2023-2024

988 SUICIDE & CRISIS
LIFELINE

 **Big Brothers Big Sisters.**
OF SALINA

BOWL FOR KIDS' SAKE

APRIL 6TH

THE ALLEY OF SALINA

BOWLING TIME SLOTS:
12PM, 2PM, 4PM, 6PM, 8PM

Bowl For Kids' Sake is Big Brothers Big Sisters largest annual fundraiser
All you have to do is gather your team, fundraise, and party to help empower potential for children in Saline County.

GIVING BACK NEVER FELT SO GOOD

TEAM UP

Form a 6-person team today! Friends, family, coworkers, neighbors - anyone can join your **TEAM**. Perfect for team building and community enrollment.

FUNDRAISE

It's almost too easy. Register online and a personal fundraising page is created just for you. **SHARE** this webpage URL to ask for donations via social media, email, text, carrier pigeon, snail mail, whatever works for you! Before you know it you will be a fundraising all-star.

Individual Goal: \$100+
Team Goal: \$600+
Super Team Goal \$1200

A super team is a team who fundraises double. They are entered into a drawing for a **FREE Team Happy Hour**.

PARTY

All that fundraising work wasn't for nothing! We are throwing your team a party with free bowling, drinks, pizza, prizes, event shirt, and more. Pick a bowling time slot that works best for your team and **LET'S GET THIS PARTY STARTED!**



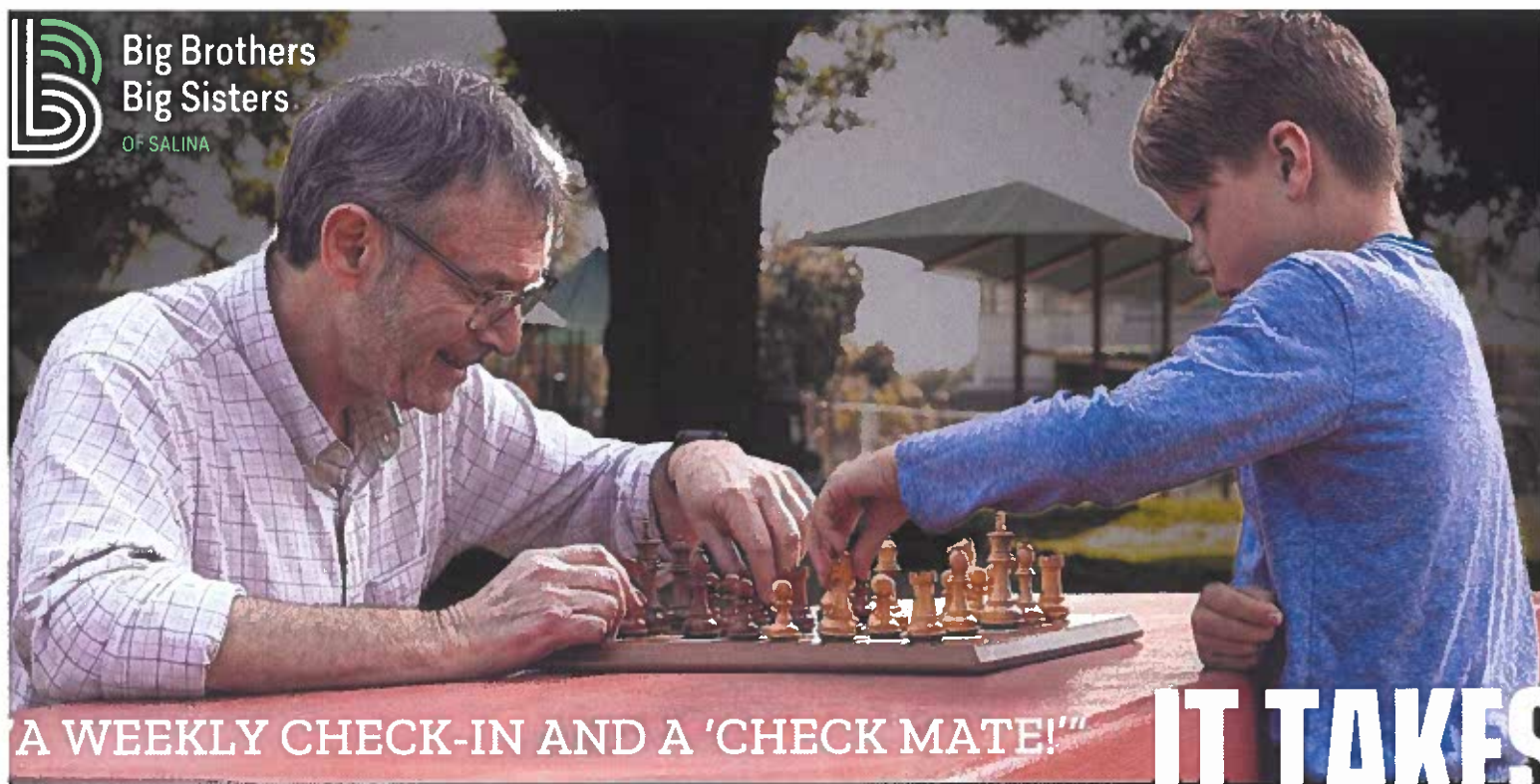
REGISTER HERE



**THE MOST FUN
YOU WILL HAVE
IN RENTED SHOES**

**THIS TEAM-BUILDING IS
RIGHT UP YOUR ALLEY**

ALL FUNDS RAISED WILL BENEFIT BIG BROTHERS BIG SISTERS



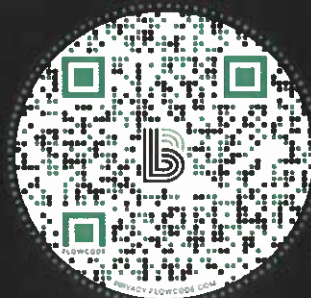
A WEEKLY CHECK-IN AND A 'CHECK MATE!'"

DONATE TODAY!

Big Brothers Big Sisters one-to-one mentoring relationships support the critical social and emotional development needed to help build resilience and promote the mental health and well-being of children in this community.

When you donate to Big Brothers Big Sisters of Salina, you directly support youth in our community. No matter how little or big the amount, donating can make a difference in the lives of young people around you.

IT TAKES LITTLE TO BE BIG



www.bbbssalina.org/give

Our Impact is BIG!



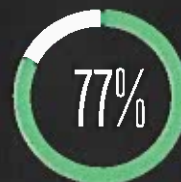
were confident in saying no to drugs, alcohol, and skipping school.



Little's have better grades, academic goals and confidence.



Little's plan to graduate high school and attend college.



Little's are doing better in school because of their Big.



Child Advocacy & Parenting Services, Inc.

35TH ANNUAL BENEFIT AUCTION

PROCEEDS SUPPORT PROGRAMS AIMED AT PREVENTING CHILD ABUSE

VIEW ITEMS THURSDAY & FRIDAY, APRIL 4 & 5
BETWEEN 9 AM & 5:30 PM

ONLINE ONLINE BIDDING
FRIDAY, APRIL 5 NOON
THRU SUNDAY, APRIL 7 AT 2 PM

PICK UP ITEMS AT THE CAPS OFFICE
155 N OAKDALE, STE 200 - SALINA KS

SUNDAY, 2PM-4PM OR
PURCHASE DELIVERY FOR \$20



SPONSORED BY:



CAPS 35TH ANNUAL BENEFIT AUCTION

There's Something for Everyone!

LOCAL RETAIL!

FABULOUS BASKETS!

PARTY PACKAGES & GETAWAYS!

GIFTS FOR LOCAL EATS, DRINKS & SWEETS

COLLECTIBLES, ORIGINAL ART & HOME BAKED FOOD!

SCAN HERE
TO REGISTER
AND VIEW THE
ITEMS:



Raffle for 50 pounds of locally raised ground beef
from Joe Ryan & Kym Burch-Ryan
\$5/ticket or 5 tickets for \$20



PLEASE JOIN US FOR A FREE REFRESHMENTS & INFORMATION

Thursday, April 18, 2024
12PM and 6PM

Roselawn Burial & Cremation Services

1920 E. Crawford, Salina, KS 67401
RSVP: (800) 815-3176

Come enjoy refreshments with us and learn about the end-of-life planning you need to do now in order to protect your family in the future. Ask a licensed funeral director any question you may have about funeral or cremation plans.

Seating will be limited to the FIRST 25 people.

You want to protect your loved ones from pain and doubt during a time of loss, but you may not know where to start. During this informative session, you will have the chance to learn about advance funeral planning options and how these decisions can help your loved ones at a time of loss. You will also learn how to avoid mistakes families sometimes make during times of grief. With the knowledge gained, you can make decisions you feel good about today and bring peace to your family when they need it most.

Advance registration is required to assist us in preparations. Please call (800) 815-3176 to make a reservation as there is limited seating.



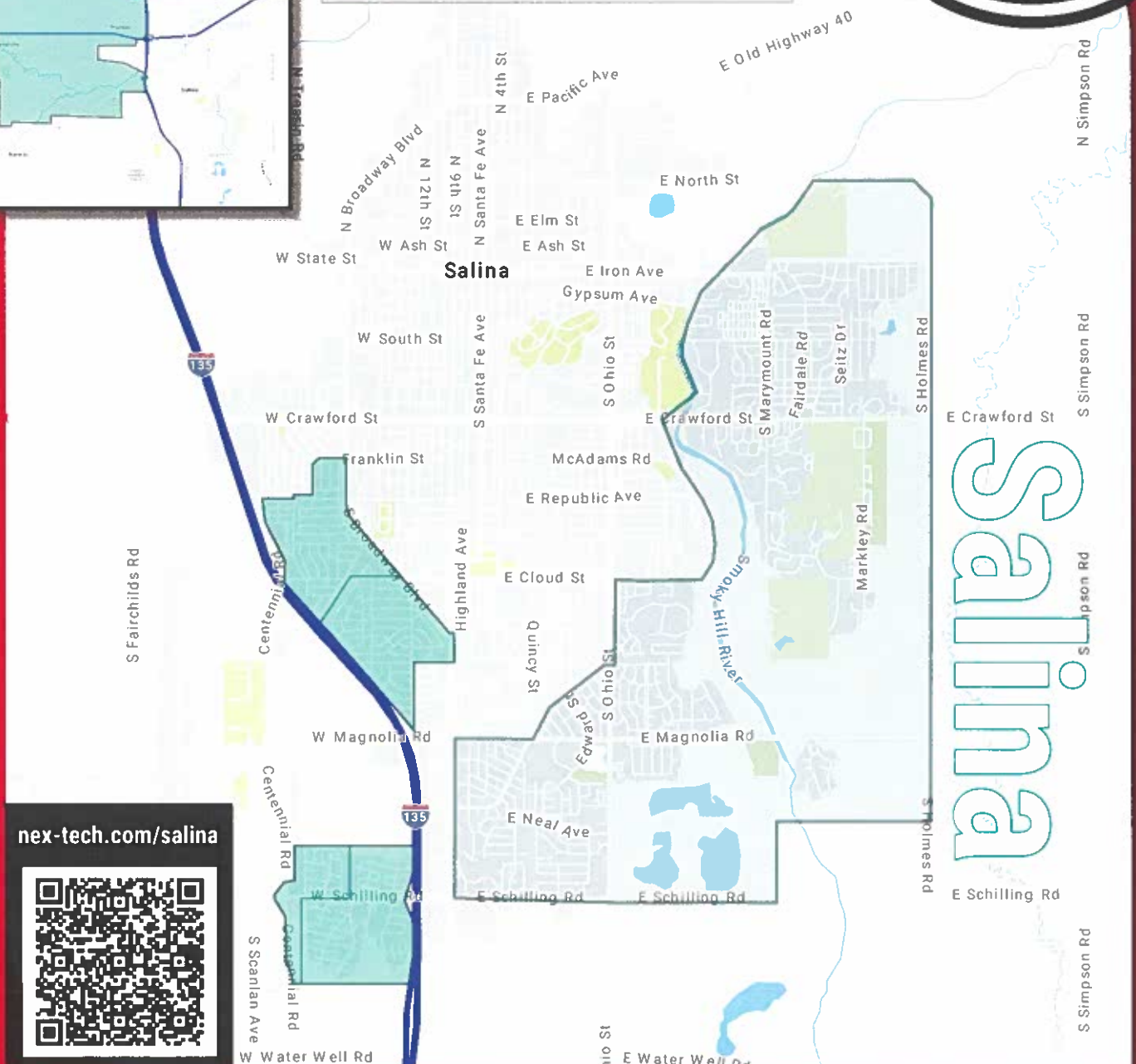
1920 E. Crawford
Salina, KS 67401
(785) 404-1014



SALINA NEX-TECH FIBER

The
BEST!
is yet to
COME.

-  2024 planned fiber expansion
-  GIG Internet available NOW!



nex-tech.com/salina



You deserve
the **BEST!**

Over 93% of Nex-Tech customers rank Nex-Tech as
Excellent or Good
Customer Service

THE BEST BUSINESS TECHNOLOGY EVENT
IN THE AREA IS COMING, DON'T MISS IT!

TECHEDGE

Presented by **N**Nex-Tech.

WEDNESDAY, JUNE 5TH
8:00 A.M - 4:00 P.M.
TONY'S PIZZA EVENT CENTER - SALINA

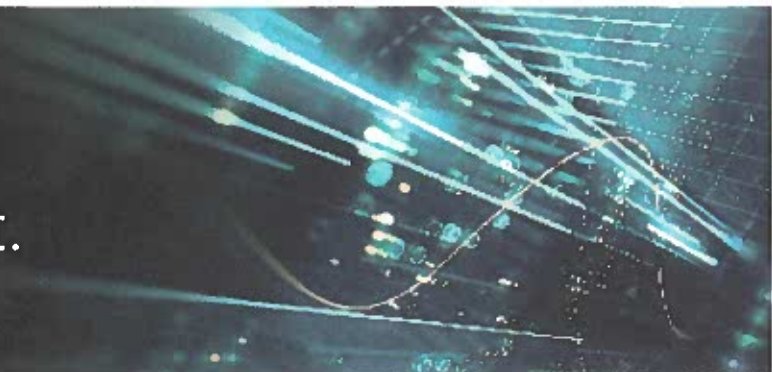


SCAN
to learn more!

What to expect:

- ✓ Informative and exciting breakout sessions on industry happenings, priceless I.T. know-how, marketing strategies, leadership nuggets, and more.
- ✓ Immersive technology experience in the vendor area with the latest and greatest in technology solutions.
- ✓ **\$10,000+ worth of prizes for giveaways in Prize-a-Palooza!**

One Day a Year.
One Amazing I.T. Event.



Let's ROLL for Kansas Childhood Cancer Families!

Love, Chloe
2024
1 mile 5k 10k
Family Fun Run
Let's ROLL for Childhood Cancer Families!

Saturday, April 20

Ash & Santa Fe / Downtown Salina

8:00am Start

REGISTRATION
INCREASES \$5
MARCH 1st

1 Mile run/walk

*\$20

*\$15 Kids 12 & younger

5k Run / Walk

*\$25

*\$15 Kids 12 & younger

10k Run

*\$30

Virtual

\$25

*Save \$5 by selecting "no shirt" on registration.

Register online:

lovechloerun.org



REGISTER HERE

Custom Race Bib & Finisher Medal
Event Shirt (optional) • Cinnamon Rolls
Raffles • Bounce House • Prizes

Love, Chloe

Let's ROLL for
Kansas Childhood
Cancer Families!

2024
Family Fun Run

1 mile 5k 10k