

ChamberNET 

# ARTIST LINEUP



FROM: SPAIN

**PICHIAYO**

MURAL LOCATION: 511 N SANTA FE



FROM: PORTUGAL

**ADD FUEL**

MURAL LOCATION: 511 N SANTA FE



FROM: LOS ANGELES

**EL MAC**

MURAL LOCATION: BACK OF STIEFEL



FROM: GERMANY

**MAD C**

MURAL LOCATION: 128 S 5TH ST



FROM: MICHIGAN

**PAT PERRY**

MURAL LOCATION: 301 W 4TH ST.



FROM: NEW YORK

**CHRIS STAIN**

LOCATIONS: 430 N SANTA FE & 115 E WALNUT ST



FROM: NEW YORK

**QUEEN ANDREA**

MURAL LOCATION: 405 THE MIDWAY





# FESTIVAL

DOWNTOWN SALINA | OCT. 5-7 | LIVE ART & MUSIC



LEARN MORE AT **BOOMSALINA.ART**

FOLLOW US  

**OUR SPONSORS:** VORTEX COMMUNITIES • BLUE DESIGN INTERNATIONAL • SCHWAB'S GLOBAL SUPPLY CHAIN • BENNINGTON STATE BANK • NEPCO ONE'S KOTE & GUY GROUPS • ART INVESTMENTS • MONTANA CANS • SALINA AREA CHAMBER OF COMMERCE • SALINA ART CENTER • KWC • ERIEVIEW PUBLISHING • WRITERS WORKSHOP • TOM & NANCY DESIGNER • WEBEL FINANCIAL GROUP • SOLIDMOUNT STATE BANK • SALINA DOWNTOWN, INC. • EXLINE • BANK OF ILLINOIS • FIRST BANK KANSAS • DOWNTOWN TRUST COMPANY • ANTHEA CENTER • SALINA ARTS & HUMANITIES • GLARK, MOZE & LUNELLE, CROCHETED • MONTRE & SPINNEY SODABOTTLE • ROOM & KOSIVY VENKOV



**Sponsored by the Salina Area Chamber  
of Commerce Military Affairs Council**

*In appreciation of service members,  
community partners, sponsors, past and present  
tournament participants, Commanders Club  
Members, and Patriot Businesses*

# **2023 APPRECIATION GOLF OUTING**

D O N V A N D E G R I F T  
M E M O R I A L T O U R N A M E N T

**SATURDAY, SEPT. 23**

**Great Life Golf & Fitness  
1800 S. Marymount Rd.  
Salina, KS 67401**

## **COST**

**\$160/team**  
Includes: green fees, cart rental,  
food, flight and other prizes

## **REGISTRATION**

**12 p.m. register**  
**1 p.m. shotgun start**  
**Food after tournament**

**Limited to 20 teams | Preregister by 9/9**  
**Call 785-827-9301 or email [scole@salinakansas.org](mailto:scole@salinakansas.org)**



Kasasa Cash®

Does your  
**FREE**  
checking pay...

**6.00%**  
APY?\*

\*On balances up to \$50,000  
when you qualify



Ask for

**KASASA REWARDS™**

It's our superpower

Kasasa Cash Back®

Does your  
**FREE**  
checking pay...

**5.00%**  
cash back?\*

\*When you qualify



\*Kasasa account details below.  
Visit any Bank of Tescott  
location to find out more!

- Earn a great rate \*
- Refunds on ATM withdrawal fees, nationwide\*
- No monthly maintenance fees, ever
- No minimum balance to earn your rewards

OUR RATES ARE

**STILL HOT!**

PICK YOUR TERM: 6 or 9 Month CD



The  
**Bank  
of Tescott**

Member FDIC

**5.09%**  
**APY\***

\*Annual Percentage Yield effective 8/7/2023. Minimum balance to obtain stated APY is \$10,000. Available for IRA's with a minimum balance of \$1,000. CD interest compounds quarterly. Automatically renews at maturity. Substantial Penalty for Early Withdrawal. Offer may be discontinued at the discretion of The Bank of Tescott.

# VISIT ANY BRANCH LOCATION FOR MORE DETAILS!

## Qualification Information:

To earn your rewards, the following enrollments must be in place and all transactions and activities must post and settle to your Kasasa Cash or Kasasa Cash Back account during each Monthly Qualification Cycle:

### Kasasa Cash:

- Be enrolled and receive your monthly account statement electronically
- At least 1 direct deposit or ACH payment
- At least 25 debit card purchases

### Kasasa Cash Back:

- Be enrolled and receive your monthly account statement electronically
- At least 1 direct deposit or ACH payment
- At least 12 debit card purchases

Account transactions and activities may take one or more days to post and settle to the account and all must do so during the Monthly Qualification Cycle in order to qualify for the account's rewards. The following activities do not count toward earning account rewards: ATM-processed transactions, transfers between accounts, debit card purchases processed by merchants and received by our bank as ATM transactions, non-retail payment transactions and purchases made with debit cards not issued by our bank. Transactions bundled together by merchants and received by our institution as a single transaction count as a single transaction for the purpose of earning account rewards.

"Monthly Qualification Cycle" means a period beginning one (1) banking day prior to the first day of the current statement cycle through one (1) banking day prior to the last business day of the current statement cycle. Visit our website at [www.bankoftescott.com](http://www.bankoftescott.com) or contact us at 785-825-1621 and ask for specific Monthly Qualification Cycle dates.

## Reward Information:

When your Kasasa Cash or Kasasa Cash Back account qualifications are met during a Monthly Qualification Cycle, you will receive the following rewards:

- **Kasasa Saver:** the entire daily balance in your Kasasa Saver account earn an interest rate of 1.9819% resulting in an APY of 2.00%.
- **Kasasa Cash:** daily balances up to and including \$50,000 in your Kasasa Cash account earn an interest rate of 5.8411% resulting in a non-compounding APY\* of 6.00%; and daily balances over \$50,000 earn an interest rate of 0.4989% on the portion of the daily balance over \$50,000 resulting in a non-compounding range from 6.00%; to 2.33% APY depending on the account's daily balance.
- **Kasasa Cash Back:** you will receive 5.00% cash back on up to a total of \$200 debit card purchases that post and settle to the account during that cycle period. A maximum of \$10 cash back payments may be earned per Monthly Qualification Cycle.

When your Kasasa Cash or Kasasa Cash Back qualifications are not met, cash back payments are not made, and the interest rate earned on your Kasasa Cash entire daily balance will be 0.05% resulting in a non-compounding annual percentage yield of 0.05%\* and the entire daily balance in your Kasasa Saver account earns an interest rate of 0.05% resulting in an annual percentage yield of 0.05%.

\* **Note:** When linked to a Kasasa Saver account, the interest earned within the Kasasa Cash account does not compound since it, along with any nationwide ATM withdrawal fee reimbursements, are automatically transferred to the Kasasa Saver account within one day. This automatic transfer may cause an overdraft to your Kasasa Cash account if the account balance is less than the transferred amount when the transfer occurs.

Cash back payments will be credited to your Kasasa Saver account on the first processing / business day of the following statement cycle. Interest will be credited to your Kasasa Cash and Kasasa Saver accounts on the first processing/business day of the following statement cycle.

APY = Annual Percentage Yield. APYs accurate as of 06/21/2023. APY calculations are based on an assumed balance of \$150,000 in your Kasasa Cash account and \$9,999,999 in your Kasasa Saver account and an assumed statement cycle of thirty-one (31) days. Rates, rewards, and bonuses, if any, are variable and may change after account is opened; rates may change without notice to you. No minimum balance is required to earn or receive the account's rewards. Rewards less than a penny cannot be distributed. Fees may reduce earnings.

## Additional Information:

Account approval, conditions, qualifications, limits, timeframes, enrollments, log-ons and other requirements apply. \$50 minimum deposit is required to open a Kasasa Cash, Kasasa Cash Back and Kasasa Saver account. Limit of 1 account(s) per social security number. There are no recurring monthly maintenance charges or fees to open or close this account. A Kasasa Cash or Kasasa Cash Back account is required to have a Kasasa Saver account. A linked Kasasa Saver account is required for automatic savings. Contact one of our bank service representatives for additional information, account details, restrictions, reward calculations, processing limitations, cycle dates and enrollment instructions. Member FDIC.

## Trademarks:

Kasasa, Kasasa Cash, Kasasa Cash Back and Kasasa Saver are trademarks of Kasasa, Ltd., registered in the U.S.A.



104 S Main, Tescott • 785-283-4217  
101 E Lincoln Ave, Lincoln • 785-524-4458  
600 S Santa Fe, Salina • 785-825-1621  
2040 S Ohio, Salina • 785-452-9975  
202 N Main, Lindsborg • 785-227-8830  
[www.bankoftescott.com](http://www.bankoftescott.com)



SALINA AREA UNITED WAY INVITES YOU TO

# CAMPAIGN

*Kickoff*  
2023

TUESDAY, SEPTEMBER 26TH

JOIN US FOR:

drinks, hors d'oeuvres, music, Funded Partner nonprofit booths and more!



**MARTINELLI'S LITTLE ITALY | BACK ROOM**

158 S Santa Fe Ave, Salina, KS 67401



Tuesday  
**SEPTEMBER 26, 2023**



**4:00PM - 7:00PM**

**COME KICKOFF OUR  
2023-2024 CAMPAIGN!**

Learn more about our  
Funded Partners and our  
new Childcare Initiative!

**United  
Way**



Salina Area United Way

**FOR MORE INFORMATION:**



785.827.1312



[unitedwaysalina.org](https://unitedwaysalina.org)

# SALINA AREA UNITED WAY

FUNDED PARTNERS 2023-2024



## EARLY CHILDCARE INITIATIVE FUND



### A childcare shortage in Saline County:

- Up to 10 children are needing care in Saline County per childcare opening
- \$23,440 is the average annual income for childcare providers in Kansas, as of May 2021 (\$11.25/hr.)
  - living wage for one adult without children in Kansas is \$15.06
- There are currently 101 childcare facility worker positions not meeting the living wage threshold
- Childcare in Saline County is a workforce recruitment and retention issue



### The Plan For the Future

United Way has started the **Early Childcare Initiative Fund** that will support and provide grants to supplement the wage gap and additional slot growth, while supporting our current childcare workforce to earn a living wage of at least \$15/hr. The fund will also allow our community to open and expand new childcare centers based on the ever-changing Saline County childcare needs. We will also work diligently towards building an endowment of \$10 Million to support the Program for the future workforce.

Salina Area United Way  
**STRENGTHEN OUR COMMUNITY**  
Grow from yesterday. Give for today. Guarantee tomorrow.



**CONTACT US:**  
Salina Area United Way  
113 N 7th St., Suite 201  
Salina, Kansas 67401  
(785) 827-1312





# NATIONAL SUICIDE PREVENTION WEEK

September 10-16, 2023



Salina Area United Way  
FUNDED PARTNERS 2023-2024



## CKMHC

CENTRAL KANSAS  
MENTAL HEALTH CENTER

**If you or someone  
you know needs  
support,  
call CKMHC's  
Crisis Line at  
785-823-6322 or  
800-794-8281.**

**National Suicide  
Prevention  
Lifeline:  
Call or text 988  
or chat  
988lifeline.org**

**988** SUICIDE & CRISIS  
LIFELINE

**Employers have a unique opportunity to raise awareness, promote mental health, and provide support to employees. Here are some ways that employers can effectively support employees during Suicide Prevention Week and year-round:**

### EDUCATION & AWARENESS CAMPAIGNS:

Employers can organize informative sessions, workshops, or webinars that educate employees about the signs of suicidal ideation, risk factors, and available resources for help. Distributing informational materials or sharing relevant articles through company communication channels can also help raise awareness.

### RESOURCE SHARING:

Employers should ensure that employees are aware of available mental health resources, both within the company and in the broader community. This could include sharing information about employee assistance programs (EAPs), counseling services, crisis hotlines, and local mental health organizations.

### PROMOTE SELF-CARE:

Employers can offer guidance on practicing self-care, stress management, and maintaining a healthy work-life balance. Simple initiatives like sharing mindfulness exercises, meditation apps, or wellness challenges can encourage employees to prioritize their mental well-being.

### MANAGER TRAINING:

Providing training to managers on recognizing signs of distress, having supportive conversations, and referring employees to appropriate resources can be invaluable. Managers play a key role in creating a compassionate and understanding workplace culture.

### PARTNERSHIPS WITH MENTAL HEALTH ORGANIZATIONS:

Collaborating with mental health organizations can amplify the impact of the employer's efforts. This could involve hosting joint events, inviting guest speakers, or sharing materials provided by reputable mental health institutions.

**By fostering a workplace culture that prioritizes mental health, employers can contribute to early intervention and support for those who may be experiencing suicidal thoughts.**





**Mental Health FIRST AID**

from NATIONAL COUNCIL FOR MENTAL WELLBEING

# Mental Health First Aid Training

Mental Health First Aid (MHFA) is a course that teaches you how to identify, understand and respond to signs of mental illnesses and substance use disorders. The one-day training gives you the skills you need to reach out and provide initial help and support to someone who may be developing a mental health or substance use problem or experiencing a crisis.

## UPCOMING TRAININGS

**MONDAY, OCTOBER 9, 8AM - 4PM**

Youth MHFA | Ellsworth, KS

**MONDAY, OCTOBER 23, 8AM - 4PM**

Youth MHFA | Bennington, KS

**FRIDAY, NOVEMBER 10, 8AM - 5PM**

Adult MHFA | Lincoln, KS

**FRIDAY, DECEMBER 9, 8AM - 5PM**

Adult MHFA | Salina, KS

**\$5 registration fee**

**Lunch will be provided**

**For more information or to register contact Gretchen  
at [gboyum@ckmhc.org](mailto:gboyum@ckmhc.org) or call 785-515-6139.**



**CKMHC**

CENTRAL KANSAS  
MENTAL HEALTH CENTER



This activity was produced by Central Kansas Mental Health Center  
with a grant from the Salina Area United Way.

Additional support provided by GSCF Match Madness donors.

# SALINA arts & entertainment!

Great things going on ●

## SalinaAE.com - The Calendar for What's Happening in Salina!

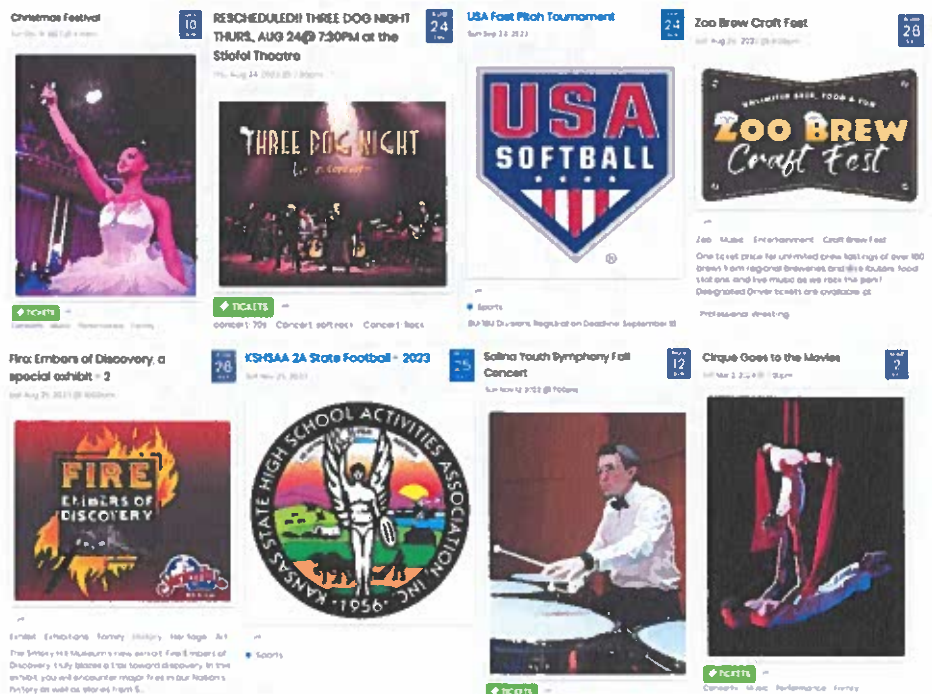
### The Calendar

The Salina Arts and Entertainment calendar was created to enable visitors and residents to easily access what's happening.

This is the most comprehensive Arts and Entertainment Calendar for Salina. Entertainment listed including theatre, concerts, exhibits, sports and special events.



Scan for free  
SalinaAE  
access



### Who Creates It?

Several individuals and organizations submit events to this calendar, thus making it one of the best places to find out about things to do in the Salina Area. Organizations that publish their events to the calendar include the Stiefel Theatre, Tony's Pizza Events Center, Rolling Hills Zoo, Salina Arts & Humanities, Salina Fieldhouse, Visit Salina and many more. This is the only calendar that Visit Salina promotes in advertising and the one we encourage to be shared with visitors and locals alike.

### Can I add an event?

If you have a local entertainment event you'd like to have placed on the calendar, simply go to SalinaAE.com and click on the "+ Add Event" button on the upper right hand side of the page. Your event will be reviewed for approval. If approved the event will be published to the calendar. (If not, an explanation will be provided.)

### What Events Do YOU want to know about?

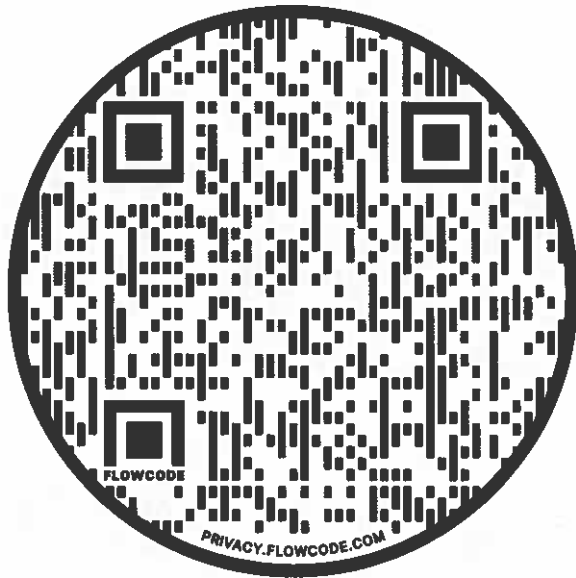
The SalinaAE.com calendar has several filters, so you can search for your favorite entertainment whether that's sports, concerts, events at specific venues, art exhibits, etc. Try easily searching your favorites by toggling "categories", "organizers", "tags" and "venues"! You can also use the search feature, or check specific dates.

For more information about the SalinaAE calendar please e-mail [tbenien@salinakansas.org](mailto:tbenien@salinakansas.org)



# SALINA arts & entertainment!

*Great things going on* ●



Scan for FREE  
SalinaAE.com  
Calendar  
Access



# 33rd Annual EMPLOYMENT EXPO 2023

Registration is  
now open!

**October 5, 2023**

**11 AM - 2 PM**

**Tony's Pizza Events Center**  
800 The Midway; Salina, KS  
Find Your Qualified Candidate!

Kansas Works  
Mobile Unit  
Will Be  
On-Site

**99KGS**  
#1 For New Country  
Live Remote



**Community  
Relations  
Division**  
Salina

**Salina**  
Area Chamber of Commerce

**Y93.7**  
**KSJOBSLINK**  
1049  
.COM

American Job Center  
**KANSASWORKS.com**  
"Your Workforce Network"

[www.kansasworkforceone.org](http://www.kansasworkforceone.org)



**99KGS**  
#1 For New Country

**Tony's PIZZA**  
**EVENTS CENTER**  
SALINA, KANSAS

**SEIRMA**  
Salina Human Resource Management Association

Table Reservation - Reservations accepted until October 2nd, 2023. Registrations and booths are **free of charge to all employers** - Sorry, no registrations from multi-level marketing companies will be accepted.

Company \_\_\_\_\_  
Contact Person \_\_\_\_\_  
Company Address \_\_\_\_\_  
City \_\_\_\_\_ State \_\_\_\_\_ Zip \_\_\_\_\_  
Telephone \_\_\_\_\_ Ext \_\_\_\_\_  
Email \_\_\_\_\_

Scan registration to:  
[ssowers@occk.com](mailto:ssowers@occk.com)  
or

Mail registration to:  
Workforce Solutions of  
OCCK, Inc.  
1710 W Schilling Rd  
Salina, KS 67401



# Signs Your Internet Can't Keep Up:



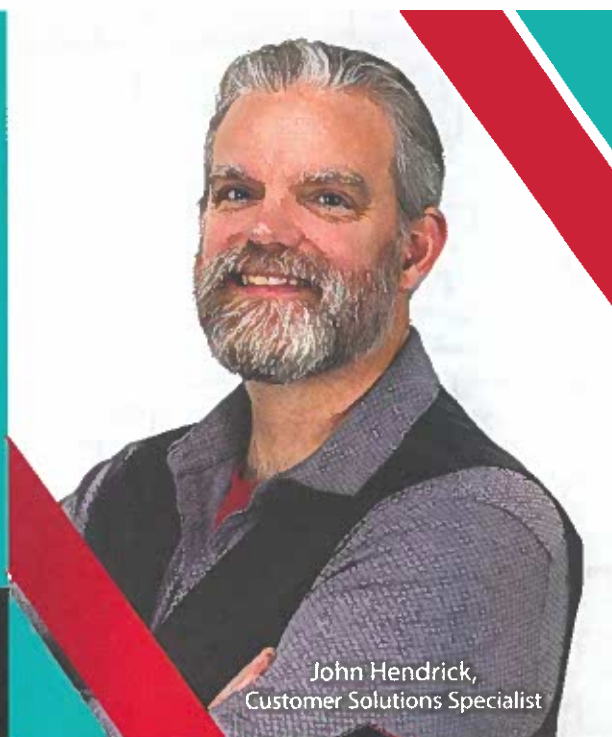
- ! *Slow file downloads + dropped video calls*
- ! *Extra fees bringing surprises every month*
- ! *Too much time on the phone with support*

## Business Moves Fast!

If your Internet can't keep pace, sign up with Nex-Tech to get:

- ✓ Upload/download speeds up to 1 Gig
- ✓ Up-front pricing + unlimited usage
- ✓ Professional installation + on-site support

**Ready to quit thinking about Internet and get business done?**



John Hendrick,  
Customer Solutions Specialist

**Click. Call. Come In...to meet John and get your questions answered!**



104 N. Santa Fe, Suite B, Salina  
[nex-tech.com/Salina](http://nex-tech.com/Salina)  
785-823-2498





# IS THERE ROOM IN YOUR LIFE?

Is there room in your heart... in your home... in your life... to transform the lives of children and families?

Most people think of foster care and adoption when they hear our name, but we do so much more.

Learn more about how you can help bring hope to children and families.

To Learn More Call 800.423.1342  
Visit us at [SaintFrancisMinistries.org](http://SaintFrancisMinistries.org).



**Saint Francis**  
MINISTRIES



# Salina symphony

Yaniv Segal  
Music Director & Conductor

# MUSIC Speaks

2023-2024 SEASON

## The Roaring Twenties

Oct. 1, 4 p.m.

Nachito Herrera, piano

Kick off the season with the sounds and spirit of the Roaring Twenties! Grammy award winning Afro-Cuban jazz pianist Nachito Herrera will thrill the audience with a riveting performance of Gershwin's iconic *Rhapsody in Blue*. The evening will end with a dazzling display of virtuosity and Latin rhythms that celebrate Classical, Jazz, and beyond!



## Passage

Nov. 5, 4 p.m.

Daniel Velasco, flute

Embark on an emotionally-rich musical journey as flutist Daniel Velasco performs Midwest native Michael Daugherty's virtuosic and heart-wrenching *Trail of Tears*, a work that pays tribute to the trials endured by Native Americans in the 19th Century. The Symphony will also perform Barber's thoughtful *Adagio for Strings* and Penderecki's intensely romantic and lush Second Symphony, "Christmas."



## Christmas Festival

Dec. 9, 7 p.m. & Dec. 10, 4 p.m.

The Symphony's cherished holiday tradition continues with song and dance from the Symphony, Iron Street Dance Company, Tamara Howe School of Dance, Salina Chorale, Kansas Wesleyan University Chorale, and Salina Youth Choir. Celebrate the season with us!



## Cirque Goes to the Movies

March 2, 7 p.m.

Cirque de la Symphonie returns to the Stiefel Theatre stage with an all new program of awe-inspiring physical feats of power and beauty! Paired with music from blockbuster movie classics, this visual thrill ride will feature acrobats, a touch of magic, and aerial flyers soaring high above the orchestra.



## Tango Classic

May 5, 4 p.m.

Hanzhi Wang, accordion

Move to the beats and rhythm of Argentine Tango with a dazzling concerto by Piazzolla performed by young accordion phenom Hanzhi Wang. The program begins with *Black Swan*, Bright Sheng's lyrical tribute to Johannes Brahms. The Symphony's mainstage season will come to a heroic conclusion with Brahms' own majestic First Symphony.



## ENCORE PERFORMANCES

### Out of the Box: American Patriots

Jan. 27, 4 p.m. & 7 p.m.

Samantha Rose Williams, Creative Producer

Theatre Salina Sunflower Financial (Black Box) Theatre

Join us for the inaugural concert of our new concert series, Out of the Box, performed in the intimate setting of Theatre Salina's Black Box Theatre. Featuring newly commissioned songs set to the unaltered text of interviews with more than 35 Americans, *American Patriots* takes an unflinching look at the lived reality of American ideals today.



### Family Concert: The Harmony Games

Jan. 28, 4 p.m.

Maggie Spicer Brown, narrator

Bring the whole family to the Symphony for an afternoon of music and more with The Harmony Games. Young concertgoers will be introduced to the instruments that comprise the orchestra while also learning how music and math are connected. The concert will also feature the wildly popular and adventurous music from Disney's *Pirates of the Caribbean*.



### Chamber Concert: Four Seasons

April 20, 4 p.m.

Leonardo Rosario, violin

Homewood Suites Courtyard

Enjoy a delightful spring evening in a beautiful outdoor courtyard while basking in the classical sounds of a string quartet and brass quintet performed by your Salina Symphony musicians (including the Maestro himself!). The program will also include Astor Piazzolla's toe-tapping *Four Seasons of Buenos Aires*, tangos inspired by Vivaldi's timeless *Four Seasons*.



### Symphony at Sunset

June 1

Eisenhower Presidential Library Campus

Commemorate the 80th anniversary of D-Day at this meaningful outdoor concert held on the grounds of the Eisenhower Presidential Library. The concert will feature patriotic favorites and popular classics.



SEASON TICKETS  
ON SALE NOW!

SINGLE TICKETS  
ON SALE SEPT. 5<sup>th</sup>.

785-823-8309 | [www.salinasymphony.org](http://www.salinasymphony.org)



**SALINA FAMILY**  
HEALTHCARE CENTER

# Finally, Healthcare made easy. Let us come to you.



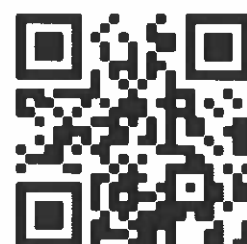
## FLU SHOTS

- Business location or by mobile medical unit
- Flexible scheduling for shift/ weekend workers
- Employer discount program for uninsured employees



## HEARTSAVER CPR

- Workforce employees or anyone wanting to be prepared for an emergency
- For: Construction, childcare, health & fitness, industrial, etc.
- First Aid/CPR/AED/choking for all ages
- \$75 for 2 year AHA certification



## BASIC LIFE SUPPORT (BLS)

- Healthcare professionals
- For: In-facility & prehospital settings
- CPR/AED, multirescuer teams, choking for all ages
- \$50 for 2 year AHA certification

Scan the above code or visit [salinahealth.org/community-outreach/](https://salinahealth.org/community-outreach/) for more information.