

Right place. Right reason. Right *now*.

*salinakansas.org*

**At a glance...**


Salina Business Hall of Fame  
Nomination Deadline . . . . . July 11  
Chamber of Commerce office  
120 W. Ash

Business After Hours . . . . . July 17  
Assurance Partners  
201 E. Iron, 5-7pm  
RSVP [dsmith@salinakansas.org](mailto:dsmith@salinakansas.org)  
or call 827-9301

Business After Hours . . . . . July 31  
Greater Salina Community Foundation  
119 W. Iron, 8th Floor, 5-7pm  
RSVP [dsmith@salinakansas.org](mailto:dsmith@salinakansas.org)  
or call 827-9301

Leadership Salina Application  
Deadline . . . . . August 4  
Chamber of Commerce office  
120 W. Ash

**On our website...**

 When you see this icon,  
it indicates that more  
information can be found  
on our website. Watch for it  
in all our publications!

**Pass it on!**

- Human Resources
- Communications
- Sales
- Staff Break Area

**Chamber to survey members  
on various topics** Page 4

## VOLUN-TEER-O-METER



Number of Hours Volunteered YTD Total

### OFFICIAL PUBLICATION

The Salina Area Chamber of Commerce [salinakansas.org](http://salinakansas.org) (USPS 478-100) is published monthly by the Salina Area Chamber of Commerce, 120 W. Ash, Salina, Kansas 67401. Periodical Postage paid at Salina, Kansas. Subscription rate to members is \$1.25 per year. Don L. Weiser, Editor. Consolidated Printing, layout and design. Postmaster: Send address changes to: [salinakansas.org](http://salinakansas.org), PO Box 586, Salina, KS 67402-0586.

### BOARD OF DIRECTORS

**CHAIRMAN** Dale Heuszel  
Kennedy & Coe, LLC

**VICE CHAIRMAN** Trey Mowery  
Central National Bank

**CHAIRMAN-ELECT** Frank Hampton  
Hampton Financial, LLC

**TREASURER** Brian Richardson  
Occupational Performance Corporation

**PAST CHAIRMAN** Clark Renfro  
Bennington State Bank

**PRESIDENT/CEO** Dennis Lauver  
Salina Area Chamber of Commerce

Jim Angell  
Kennedy, Berkley, Yarnevich,  
& Williamson, Chd  
Trent Davis, MD  
Salina Regional Neurosciences.

E. Andrew England  
St John's Military School  
Dr. Verna Fitzsimmons  
Kansas State University Salina

M Olaf Frandsen  
Salina Journal  
Greg Goode  
Salina Area Technical College

John Gunn  
ISG Technology

Mike Junk  
Crestwood, Inc.

Mel Kejr  
Geoprobe Systems

Joel Phelps  
Salina Regional Health Center

Todd Smith  
K Tron

Michael Spicer  
Salina Community Theatre, Inc.

Jim Thomas  
Exide Technologies

Betsy Wearing  
Greater Salina Community Foundation

Frieda Mai Weis  
PKM Steel Service

Jason Wells, DDS  
Dental Care of Salina

SDI

## Downtown News

By Melissa Rose Hodges, Executive Director, Salina Downtown, Inc.  
[mhodes@salinadowntown.com](mailto:mhodes@salinadowntown.com) • 825-0535

# SIDEWALK SALE BLOCK PARTY *and* SUNSET CRUISE



**KKOA LEAD SLED**

**SIDEWALK SALES 4-8P ★ SUNSET CRUISE AT 7:30P**

**THURS** | *Free* COTTON CANDY • SNO-CONES  
**24<sup>TH</sup> JUL** | **SHOP** | **WATCH** | **PARTY**  
BARGAINS GALORE!!! | HUNDREDS OF VINTAGE CARS | FOR THE WHOLE FAMILY

**DOWN TOWN SALINA IS WHERE IT'S AT ★**

**SALINADOWNTOWN • COM**



## Ribbon Cuttings



**KWIK Shop** recently opened their new expanded facility at 1727 W. Crawford, and celebrated with a grand opening and Chamber ribbon cutting.



**Salina Vape, LLC** recently opened at 117 E. Iron, and celebrated with a grand opening and Chamber ribbon cutting.



**CVS Pharmacy** recently opened at Crawford and Ohio, and celebrated with a grand opening and Chamber ribbon cutting.



**Sterling House Fairdale**, 2251 E. Crawford, recently completed a major remodeling and renovation project and celebrated with an open house and Chamber ribbon cutting.



Dennis W. Lauver shared a link via HootSuite.  
about an hour ago

Nearly 8,000 views of this music video of people that are happy in downtown Salina! #AdvantageSalina [http://www.youtube.com/watch?v=DoY88ly8u\\_Y](http://www.youtube.com/watch?v=DoY88ly8u_Y)



Salina Downtown Happy  
Salina Downtown gets happy! What a FUN place to be!

Visit Salina shared Kansas Tourism's photo.  
Posted by Allison Webb (?) · June 16

If artistic tunes are your style, envelope yourself in performing arts at the ornate, Art-Deco style historic Stiefel Theatre for the Performing Arts in Visit Salina, where stellar musical and theatre acts are on tap year-round. [#NoPlaceLikeKS](http://bit.ly/T0ovbc)



Visit Salina  
Posted by Seth Pullos (?) · June 11 · Edited

Sidney from Country Inn & Suites By Carlson, Salina, KS got "shopped," and she won two passes to City of Salina's Kenwood Cove Aquatic Park!!!!



Salina Area Chamber of Commerce shared a link.  
Posted by Simple Share by Constant Contact (?) · June 13

Treasures+of+Ireland+Trip+ <http://conta.cc/1xRKTtw>

### Treasures of Ireland

featuring Dublin, Limerick & Killarney

#### Highlights

- 3 Night Carlini Day
- 2 Nights in Limerick & 2 Nights in Killarney
- 2 Nights in Dublin
- Dublin City Tour
- Historic College: House of Wells
- Old Jameson Whiskey Distillery
- Castle of Kesh
- Ring of Kerry
- Beautiful Castle Kinsale
- Glenbeg & St. Kevin's
- Learning to Ride
- MacKenzie House & Gardens
- Killarney
- Blarney Castle & Winkler Mills
- Adams & Gormley City Tour

#### Irish Music

Treasures+of+Ireland+Trip+  
conta.cc

This will be a great opportunity to once again travel with people from Salina and from this regional area to learn about people and economy's from other parts of the world.

# Chamber to survey members on various topics

In an effort to get membership feedback on its performance, the Chamber will be surveying the members over the next several months. A series of three separate surveys will be sent by email and regular mail beginning this month and will deal with Membership, Economic Development and government Relations.

The survey results will be used during the Chamber's strategic planning process as a means of evaluating how well the Chamber meets members' needs, identifying business community challenges and opportunities, and assessing the value of the benefits provided to members.

"It is very important from a programming standpoint that

we hear from our members," stated Dale Heuszel, Chamber Chairman of the Board. "We want to make sure their

membership is relevant to them and that the Chamber is providing the programming so they can get the most out of their membership."

The surveys can be filled out online and submitted to the Chamber for tabulation. Those wishing not to fill them out online can complete the survey and fax them to the Chamber at (785) 827-9758. Members filling out the surveys will be eligible for a drawing for a \$100 Smoky Hill Silver Gift Certificate.

Results of the survey will be presented to the Chamber Board of Directors and shared with the entire Chamber membership.



## When Irish Eyes Are Smiling--

### Area Chambers to host trip to Ireland

The Salina Chamber, along with the Junction City and Manhattan Area Chambers of Commerce are hosting a trip to Ireland April 20-28, 2015. The group will depart Kansas City and visit Dublin, Limerick and Killarney. It is a great opportunity to travel with people from Salina and this region to learn about people and economies from other parts of the world.

Highlights of the trip include a one night castle stay, two nights in Limerick and two nights in Killarney, two nights in Dublin, Dublin city tour, Trinity College-Book of Kells, Old Jameson Whiskey Distillery, Cliffs of Moher, Ring of Kerry, Bunratty Castle Medieval Banquet, Glendalough and St. Kevin's, Jaunting Car Ride, Muckross House and Gardens, Limerick, Blarney Castle and Woolen Mills, Adare and Galway city tour. Accommodations include seven nights in first class hotels.

Enclosed is a preliminary itinerary and details of the trip. **There will be an informational meeting on Tuesday, July 29 at 6pm in the Chamber's Visit Salina Annex, 120 W. Ash.** A representative from the travel company will be presenting a short program about the trip and answer questions.

For more information or questions, contact Sandy Cole at the Salina Chamber, 827-9310, ext. 123.



## Hitting that Grand Slam in Salina!

The Kansas Grand Slam Baseball Tournament, a fixture in Salina for over two decades, will be held

July 3-6 at the East Crawford Recreation Area.

Twenty teams in the 19-Under and 17-Under age divisions from Kansas, Missouri and Nebraska will compete in pool play and bracket play over a four-day period at Dean Evans Stadium and James Matson Field. Ten teams will compete in the 19-Under division and eight in the 17-Under.

The 24th annual wood bat tournament, which also features Salina's three American Legion teams - the Falcons, Hawks and Eagles -, begins at 9 a.m. Thursday, July 3. The championship games will be held Sunday afternoon on July 6, with the 17-Under division deciding the title on James Matson Field at 2:30 p.m. and the 19-Under division holding its championship game at Evans Stadium at 3:30 p.m.... Awards will also be given to the leading hitters in each age division. For more information on the tournament, go to the tournament website at <http://www.kansasgrandslam.org/>



# 34th Annual KKOA Leadsled Spectacular Cruisin' In!

*10th year in Salina promises to be bigger, better, cooler than ever!*



For the 10<sup>th</sup> consecutive year, the Kustom Kemps of America (KKOA) are cruisin' back to Salina! Oakdale Park is where the estimated 1600+ Kustom Kems, Hotrods, Drag Machines and their drivers will descend upon Salina for the weekend... with their Leadsled Spectacular event.

Some background...a 'kustom kemp' refers to a car or truck, sometimes highly 'kustomized', used by teenagers in the late 50's and early 60's. You'll see the 'kooliest kustomized kems' on wheels during this event. Each year the show has grown. Moving to Salina in 2004, the Leadsled Spectacular started in Thomas Park bringing a few hundred cars. Since that time it has grown to a much larger event featuring other 'kool' highlights centered

around their Oakdale Park location.

It begins with the 4th annual **Spectacular Sundown Cruise** where a sampling of hotrodders will make passes up and down Santa Fe in front of spectators on Thursday evening, July 24, starting at 7:30pm. The Cruise follows special activities planned in the heart of the community by Salina Downtown Inc.

Always a BIG draw of the event is the **"Run-Whatcha'-Brung Friday Night Drags"** south of Dean Evans Stadium just off Markley Road. Drags are 5:00pm-dusk, and admission is \$10 per person for bleacher area seating. The public is also welcome at the **"Kustom Kems of America Rock & Roll Spectacular"** at the Stiefel Theatre, 8pm Saturday night, featuring a Johnny Cash tribute artist. Doors open at 7pm and tickets are \$20 at the door.



Cars will be on display during the **"Show and Shine"** Friday, Saturday and Sunday in Oakdale Park. Features of the show include the Pin-Up Beauty Contest, Bicycle Spoke-tacular, Pin Stripers, Swappers, Model Car & Truck Spectacular, two stages of live Rock & Roll and Rock-A-Billy music, car chopping at the Godzilla Garage with Bill Hines and Brad Masterson. Movie and television stars Candy Clark, Bo Hopkins and Cindy Williams - all of American Graffiti - will be special guests all weekend.

The KKOA crowd will enjoy with a block party featuring store specials, free cotton candy & popcorn and more from 4-8pm Thursday. On Friday and Saturday from 11am-4pm, an SDI shuttle between Oakdale Park's Mulberry and three stops along Santa Fe will transport KKOA'ers to enjoy all downtown has to offer.

A group of Wounded Warriors plans to be on site at Oakdale Park during this year's Show and Shine. Come out and show these heroes how much we all appreciate their dedication and sacrifice!

Admission to the show is by day pass, available at the gate: \$12 on Friday, \$15 on Saturday and \$10 on Sunday. Kids 12 and under are free. Spectators should park at the Bicentennial Center, and enter via the north bridge. For more information, go to [www.kustomkempsofamerica.com](http://www.kustomkempsofamerica.com).

## Marquee Welcomes

July	Class and Family Reunions!
July 3-6	Kansas Grand Slam Baseball Tournament-DE
July 11	Sacred Heart Alumni Golf Tournament-SCC
July 12-13	Knights of Columbus
July 12	KS ASA State Fast Pitch Softball 16U & 18U Class C Championship-BB
July 14-17	KS Golf Assn. Juniors Tournaments-SCC & SMG
July 18-24	KS Shrine Football Practice
July 22-23	KS Golf Assn. Seniors Tournament-SCC
July 24-27	KKOA Leadsled Spectacular-Oakdale Park & ECRA
July 25-27	Wally Beets Golf Invitational-SCC

## Dollars & Sense

Recent groups Visit Salina worked with and the estimated visitors' spending they created in the community:

### Dept. of Kansas VFW

\$145,140

### KS Square Dance Convention

\$79,670

### PIA

\$20,670

### ICE

\$27,792

### KS Hershey Track & Field

\$26,815

### Palomino Horse Exhibitors of KS

\$21,600

### KS ASA State Fast Pitch

\$189,962

### Dunbar School Reunion

\$10,635

### State Federation of Democratic Women

\$24,895

### KBCA All Star Game

\$17,745

## In The News

**Nex-Tech Wireless**, with a home office in Hays, and a Salina office at 2525 Marketplace, Suite B, announced that iPad Air with Wi-Fi + Cellular and iPad mini with Retina display with Wi-Fi + Cellular are now available. Nex-Tech Wireless is offering these new iPads with a range of attractive data plans that allow customers to connect to its fast 4G LTE network with speeds up to 6-mbps for downloading and 2-5mbps for uploading. For more information on iPad please visit [www.apple.com/ipad](http://www.apple.com/ipad).

**GOT NEWS?** Do you have news to share about your business or organization? Email [dweiser@salinakansas.org](mailto:dweiser@salinakansas.org) and we'll publish it in an upcoming issue of [salinakansas.org](http://salinakansas.org).

**Kennedy and Coe, LLC**, a national accounting and consulting firm in the food and agriculture industry announced plans to merge with California CPA firm, Matson and Isom. The merger will become effective January 1, 2015, pending final approvals. Together, the firm becomes one of the nation's largest agricultural consulting and CPA practices. Jeff Wald will preside as CEO and the firm will bear a new name which honors the legacies of the two firms.

**Catholic Charities of Northern Kansas (CCNKS)** Annual Fundraiser will be held Sunday, July 20, from 5-7:30pm at the Ambassador Hotel (formerly the Ramada Conference Center.) Anonymous donors have offered a dollar-for-dollar, matching donation up to \$60,000. The evening includes social time, cash bar, dinner, live music by the Five Facets of Jazz. For reservations, call 785-825-0208, ext. 204 or email [jwarner@ccnks.org](mailto:jwarner@ccnks.org). Donations can be mailed to CCNKS, PO Box 1366, Salina KS, 67402 or online at [www.ccnks.org](http://www.ccnks.org).

**Sunflower Bank** has been voted Dodge City's best bank for the second year in a row in the Dodge City Daily Globe's 2014 Reader's Choice Awards. Sunflower Bank is a \$1.7 billion community bank, offering a complete line of personal checking, saving, mortgage and loan options, as well as business deposit, loan, and treasury management services and trust and wealth management services. Sunflower is based in Salina, with other locations throughout Kansas, Colorado, and Missouri.

**Pepsi Cola Bottling Co. of Salina** is owned and falls under the corporate umbrella of a larger, family owned business (Mahaska) that is celebrating its 125th anniversary this year. Branden Muhl, the fifth generation owner, has initiated a re-brand for the company and changed the name of the company to Mahaska. Mahaska is an all American company that is proud of its heritage and the communities that it conducts business in. As an entity dating back to the late 1800s, Mahaska is committed to continuing its reputation of providing superior service to its customers and communities. They will continue to distribute all the great snacks and soft drinks that everyone loves as well as add more products to our portfolio. Mahaska is a company that bottles and distributes beverages, distributes snacks, sells a full line of coffee and tea equipment and services, leases and sells ice making equipment, provides over-the-road trucking services, and freight forwarding.

**Lisa Fisher-Ross**, a physical therapist at Salina Physical Therapy, a division of COMCARE owned by SRHC, has completed training to assess the abilities of workers needing to return to work after an injury. The training was provided by WorkWell, who has been providing training for over 20 years to help match the worker with the work to increase workplace safety. For additional information contact Salina Physical Therapy at 785-825-1361.

## New Members

**NATURESCAPE LAWN & LANDSCAPE**  
2763 Melanie Lane • Derik Bernhardt  
(785) 643-0239 • [info@naturescapesalina.com](mailto:info@naturescapesalina.com)

**ACCU-CRETE**  
P.O. Box 119, Hesston, KS 67062  
Scott J. Rempel • (620) 327-7356  
[scott@accu-crete.net](mailto:scott@accu-crete.net)

**STUDIO K**  
113 N. Santa Fe • Katelyn Komarek  
(785) 577-3984 • [katelyn-komarek@hotmail.com](mailto:katelyn-komarek@hotmail.com)

**THE LINGER LONGER SODA AND SANDWICH SHOP**  
119 N. Nelson • Bennington, KS 67422  
Jay and Sharolyn Wagner  
(785) 378-SODA • [thelingerlonger@gmail.com](mailto:thelingerlonger@gmail.com)

**DAVE ANTRIM**  
Elmore Plaza, Inc. • 631 E. Crawford  
(785) 826-0015 • [elmore@usa.net](mailto:elmore@usa.net)

## ENDLESS PAWS ABILITIES SPA & BOUTIQUE

745 E. Prescott • Jessica Brown  
(785) 404-6464  
[endlesspawsabilities@outlook.com](mailto:endlesspawsabilities@outlook.com)

## BROOKDALE HOSPICE

123 Indiana, Suite C  
Tamara Britton, RN, Jennifer Gunelson  
(785) 309-0385 • [tbritton@brookdale.com](mailto:tbritton@brookdale.com)

## MAGGIE MAE'S BAR & GRILL

409 S. Broadway  
Tracy Hawk, Peggy Timmons-Lohf  
(785) 825-9829

## BOOMERS BAR & GRILL

116 S. Broadway  
Tracy Hawk, Peggy Timmons-Lohf  
(785) 404-2630

## Z WIRELESS

902 E. Crawford • Troy Schwartz  
(785) 404-3133 • [troy.schwartz@zwireless.com](mailto:troy.schwartz@zwireless.com)

## CVS PHARMACY

681 S. Ohio • Zane Czlucer  
(785) 309-0618 • [czlucer@yahoo.com](mailto:czlucer@yahoo.com)

## THE RUSTY RAINDROP, LLC

1945 S. Ohio, Suite A • Traci Dent  
(785) 820-7087 • [rustyraindrop@gmail.com](mailto:rustyraindrop@gmail.com)

## Ambassador of the Month



Tracee Powell

Tracee Powell, assistant director of Eaglecrest Retirement Community, has been named "Ambassador of the Month" for the second consecutive

month. Tracee received the honor by securing six new members during the month of June, bringing her yearly total to 11 new members.

"Tracee is just doing an outstanding job securing new members," stated Pat Foster, Ambassador Chairman. "Securing six new members in one month is quite an accomplishment. She will certainly play a key role in our success this year."

For her efforts, Tracee will receive a \$25 Smoky Hill Silver Gift Certificate. Congratulations Tracee!



## Ground Breaking and Ribbon Cutting



Kansas Wesleyan University held a ground breaking for their new football complex.



Big Brothers/Big Sisters recently relocated to their new facility at 500 Kenwood Park Drive and celebrated with a Chamber ribbon cutting.

## Convention Corner

Visit Salina expects around 100 people in Salina for the weekend of July 12 & 13 when the **Knights of Columbus** Regional Convention takes place at the Ambassador Hotel. The event includes Installation Meetings for State Officers & District Deputy. State Deputy Scott A. Maurath is hopeful Kansas will be #1 in membership and be in the Circle of Honor again this year.

## Take 5

Meet Chamber Member Shelley Donaldson, general manager of Comfort Suites as you read excerpts from our 5-minute/5-question interview.



**What is it about your business that is unique or special?**

*We strive on offering exceptional customer service as well as cleanliness to all of our guests so they have a wonderful experience. Located on I-135 off Schilling Road, we are close to several shopping stores as well as food establishments.*

See the entire interview, and others, posted at [www.salinakansas.org/chamber/take\\_5.aspx](http://www.salinakansas.org/chamber/take_5.aspx)



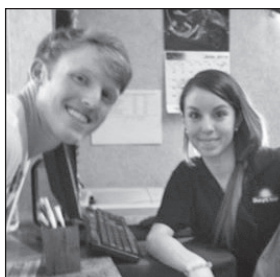
Want to be interviewed about your business?  
Contact [info@salinakansas.org](mailto:info@salinakansas.org)!

## Congrats to these local hospitality stars!

These are hotel front-liners among several who have been 'shopped' by our Secret Visitor, "Seth the Intern". Each was rewarded for providing GREAT customer service! Keep up the excellent work!



• Myardi, Courtyard by Marriott



• Megan, Days Inn (I-70)

"Save Money  
by Shopping  
Locally"

Text SMS5  
to 313131

# BUSINESS *after* HOURS

REFRESHMENTS • TOURS • DOOR PRIZES

## Assurance Partners

201 E. Iron

Thursday, July 17

5-7pm • \$5 per person

**Assurance Partners** – one of the largest risk management firms in the Midwest – has relocated their corporate headquarters to the Salina Downtown Business District. The business began in 1970 in Downtown Salina as Insurors and Investors, and is now returning and reinvesting in the growing Downtown community. By providing custom insurance solutions for individuals, families and businesses, their team of experienced professionals can help design a plan to meet everyone's needs. The staff at Assurance Partners is excited to be Downtown and are eager to partner with more businesses in Salina and the surrounding areas.

## Greater Salina Community Foundation

119 W. Iron, 8th Floor

Thursday, July 31

5-7pm • \$5 per person

**Greater Salina Community Foundation** promotes and supports charitable giving by assisting individuals, families and organizations in the creation of charitable funds; building resources to provide for unmet community needs; making grants to charitable causes; and providing a platform for long-term support of non-profit organizations and neighboring communities. Join them as they celebrate their 15th year of service with an open house of their brand new offices in the historic United Building..

*Come out, network with Chamber members, and see the new facilities of Assurance Partners and the Greater Salina Community Foundation.*

**For reservations call 827-9301 or email [dsmith@salinakansas.org](mailto:dsmith@salinakansas.org)**

**DOOR PRIZES (MUST BE PRESENT TO WIN)**  
**\$100 CASH ATTENDANCE DRAWING**  
**\$500, \$500, \$1,000 MEMBERSHIP DRAWING**

## Membership Winner!

Rod Meier, owner of Meier Moving and Storage, won a \$500 Membership Drawing at the June 26 "Business After Hour" at the Salina Regional Health Center.

## It Pays To Attend!



120 W. Ash, P.O. Box 586 • Salina, KS 67402-0586  
785-827-9301 • fx 785-827-9758 • [www.salinakansas.org](http://www.salinakansas.org)

HELP US KEEP YOUR ADDRESS CORRECT If address is wrong in any respect, please correct directly on the label and return to Chamber of Commerce. Thank You!

PERIODICAL  
POSTAGE  
PAID  
SALINA, KS 67401

## Nominations due for Salina Business Hall of Fame



1858-1925

**PIONEER**



1926-1975

**HISTORIC**



1976-Present

**CONTEMPORARY**

Time is running out for nominations for the 2014 class of the Salina Business Hall of Fame. Nominations are due in the Chamber office by **5pm, Friday, July 11**. Categories for nominations include: **Pioneer Award - 1858-1925; Historic Award - 1926-1975; Contemporary Award - 1976-present.**

Nominations can be made by both Chamber members and the general public. Individuals nominated in previous years will be considered again this year. Nomination forms and eligibility criteria are available at the Chamber office, 120 W. Ash, or can be downloaded by clicking on "Hall of Fame" on the Chamber website homepage at [www.salinakansas.org](http://www.salinakansas.org). The inductees will be honored at a special luncheon this fall.

## Preparations underway for the next Leadership Salina class

Applications are currently being accepted for the next Leadership Salina class. The program, a project of the Chamber and Greater Salina Community Foundation, is designed to develop leaders who will have the skills and capacities to move Salina and local organizations and businesses forward. The program consists of seven sessions, one session every two weeks beginning September 4, plus a 2 ½ day Kansas Community Leadership Summit in Wichita. The program concludes November 20.

Leadership skills included in the program are Learning Styles; Steps to a Performing Community; Wisdom Cycle; Consensus and Collaboration; Vision Process; Facilitation Techniques; Creative Thinking; Listening; Storytelling; and Servant Leadership.

The program is open to all interested persons. The maximum class size is 30 individuals. Tuition is \$450 per person, which includes all materials, meals, social functions, and lodging. Partial scholarships are available.

Anyone wishing to receive more information on the program can contact the Chamber office, 120 W. Ash, 827-9301. Applications are due August 4, and are available at the Chamber office or can be downloaded by clicking on "Leadership Salina" on the Chamber website homepage at [www.salinakansas.org](http://www.salinakansas.org).

